



Youth and Women Agri-Entrepreneurs' Roles in Agricultural Development in Nepal

Innovations in the Agriculture & Food Sector

Presented by Moushumi Shreshtha
Social Entrepreneur & Director, Shreenagar Agro Group





**"Agriculture is the most
healthful, most useful
and most noble
employment."**

— George Washington

Moushumi Shrestha
Shreenagar Agro Group





Nepal's Agriculture & Food

Out of Nepal's total population, around 60% are engaged in agriculture

According to the International Labor Organization, agriculture provides livelihoods for 68% of Nepal's population, accounting for 34% of the GDP. Nevertheless, Nepal struggles to produce an adequate supply of food for its citizens.



Shreenagar
from Ideas to Impacts...

Shreenagar Agro Group is an integrated agri-business company with an aim to energize the Nepalese agronomy by providing all the services a farmer needs.



The Three F's



Farm



Feed



Food



SHREENAGAR GROUP

FARM TO FORK (वाली देखि थाली सम्म)

FARM

POULTRY

- GP Farm
- Breeder Farm
- Hatchery
- Contract Farm
- Broiler Farm
- Layer Farm
- Mamori
- Rendering Plant
- Bio Gas

LIVESTOCK & AQUA

- Dairy Farm
- Goat Farm
- Fish Farm
- Piggery Farm

CROPS

- Maize
- Soye
- Paddy
- Wheat

FEED

- Poultry Feed
- Cattle Feed
- Fish Feed
- Pig Feed
- Goat Feed

Warehouse
Warehouse Receipts / Insurance, Financing

FOOD

SLAUGHTERING

Slaughtering
Cold Room

PROCESSING

Meat Processing
Dairy Processing
Eggs

OUTLETS

Fresh/Hygienic Markets
GSRs
Agri. Centers



SHREEKISAN
Empowering
Farmers, Ensuring
Progress



SUNAULO CHICKS
Broiler and Layers
Day Old Chicks



SUNAULO FEED
Internationally
Proven Quality
Broiler, Layer, Kroiler/
Giriraj, Cattle, Pig and
Fish Feed



SUNAULO SERVICES
Technical Assistance, Training
& Capacity Building Services,
Access to Finance/Insurance and
Shree Kisan Innovation Hub



SUNAULO MARKET
Contract Farming,
Branded Eggs & Meat,
Buyback Eggs and
Chicken from Farmers
and Provide Sunaulo
Anda, Golden Egg,
Fish, Duck and Meat
to Our Customers

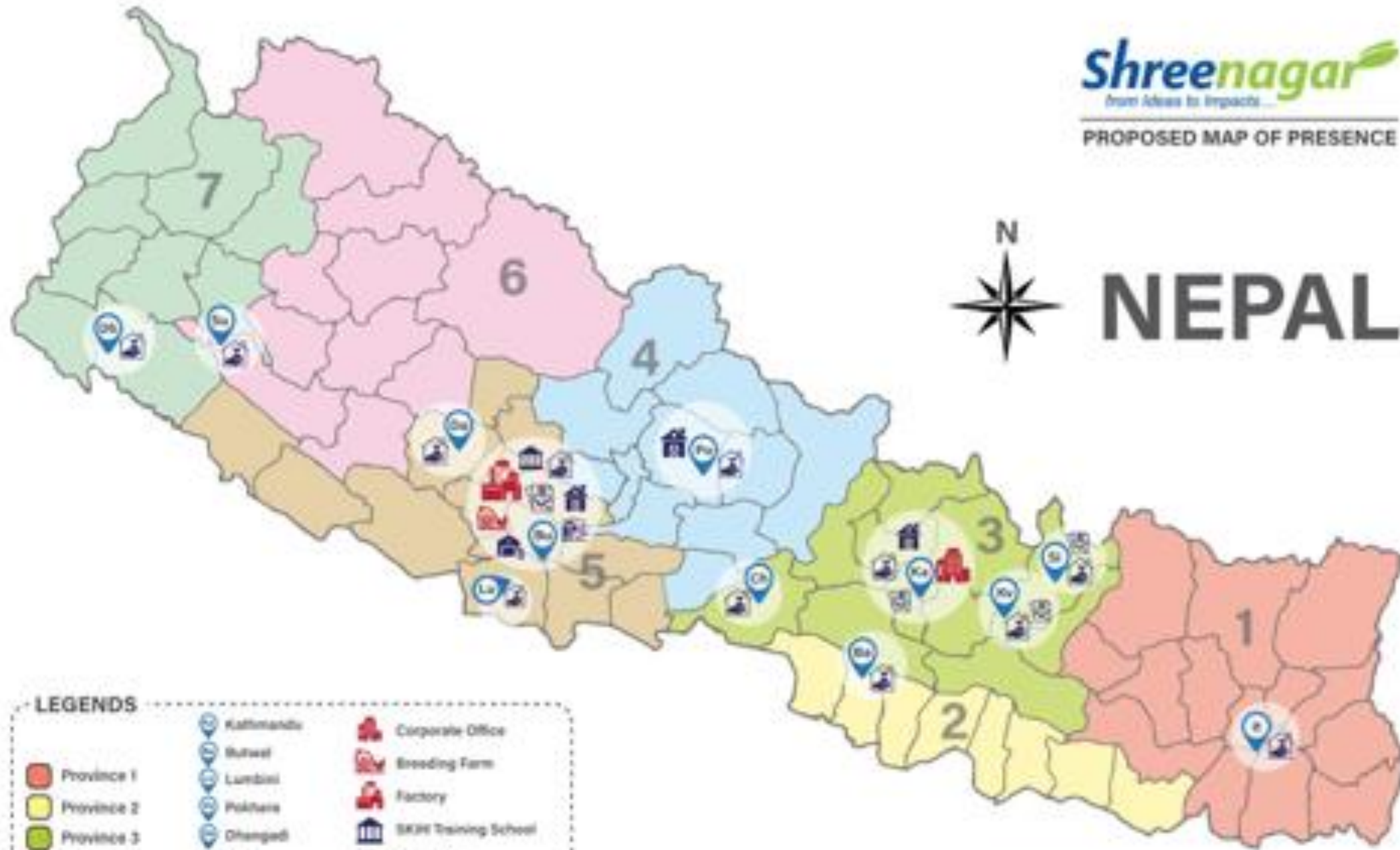
Shreenagar in making of
Shreekisan

Shreenagar
from ideas to impacts

PROPOSED MAP OF PRESENCE



NEPAL



LEGENDS

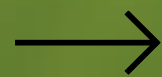
- | | | | | | |
|--|------------|--|---------------|--|---------------------|
| | Province 1 | | Kathmandu | | Corporate Office |
| | Province 2 | | Bhaktapur | | Breeding Farm |
| | Province 3 | | Lumbini | | Factory |
| | Province 4 | | Pokhara | | SKM Training School |
| | Province 5 | | Dhading | | Demo Farm |
| | Province 6 | | Dang | | Agri Centers |
| | Province 7 | | Chitwan | | Cold Room |
| | | | Bans | | Fresh House |
| | | | Karnali | | Contract Farming |
| | | | Rapti | | |
| | | | Sudurpashchim | | |
- Existing
 Proposed



Vulnerability in Agriculture and Food Sector



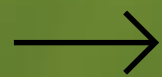
Health
Risks



Hunger



Farmers'
Livelihoods



Health Risks

Food production is essential for survival. All people involved in this supply chain are in the frontline taking life threatening risks.

- Inadequate health facilities and tracking in the rural areas leads to misleading data and difficult to monitor
- Nepalese Farmers have insufficient knowledge on health precautions and security.
- Livestock Farmers are in constant contact with animals.
- Due to the lack of strict regulations, vendors and farmers are in contact with thousands of customers.



Hunger

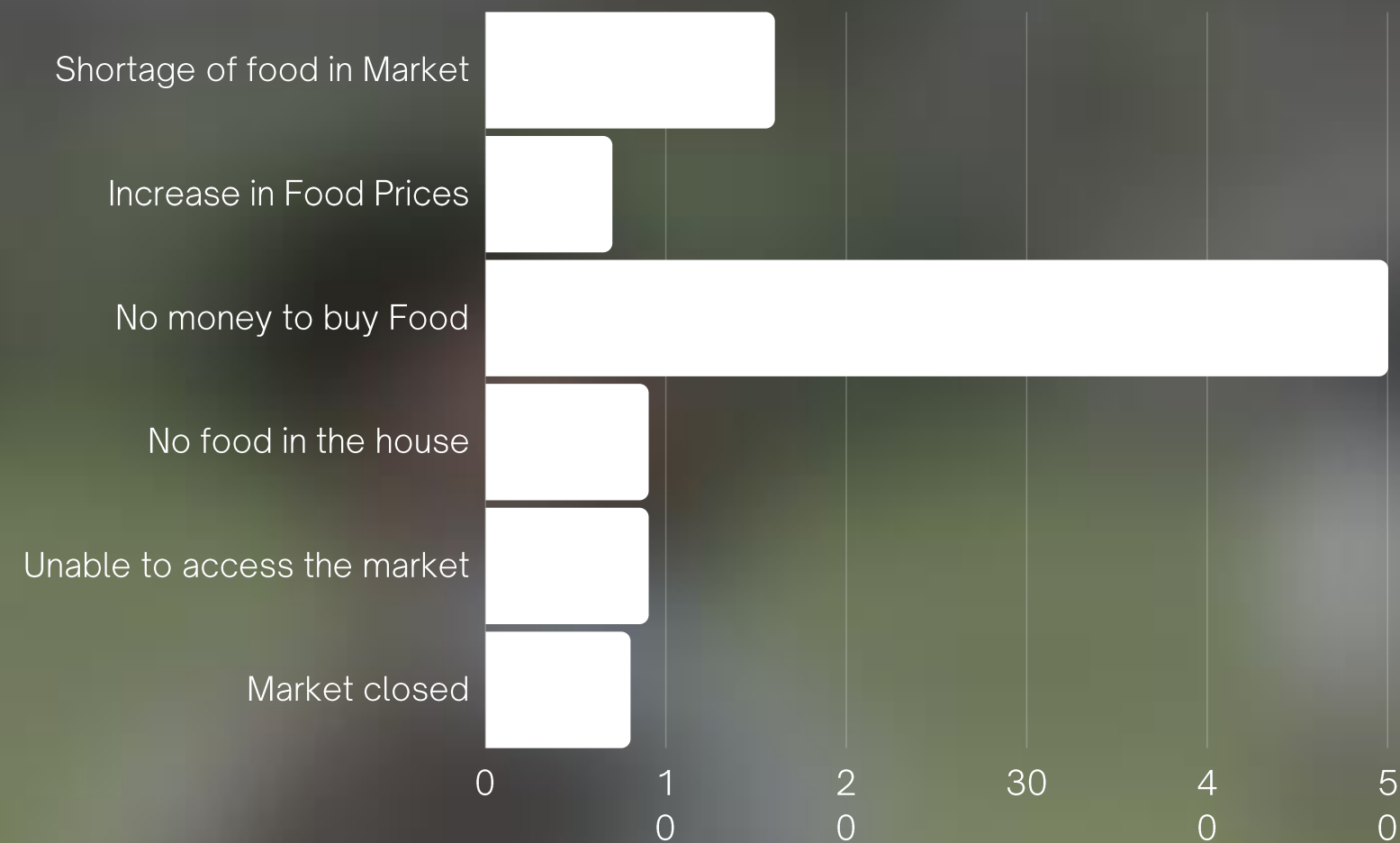
COVID-19 risks increasing the number of people facing acute hunger from **135 million to 265 million**, unless urgent action is taken.*

- Food availability will severely be impacted. Shortage of staple food, lack of food production and imports.
- Food accessibility: decrease in consumer access to food, reduced diet diversification
- Millions of families depend on remittance sent from workers abroad
- Significant decrease in income has led to an increase demand of unhealthy food, leading to unbalanced diets.
- Food Quality: increased demand in processed food
- Impact on food sustainability (Food Waste)



Income & Consumption of Food in Nepal October 2020

World Food Programme



Reported Reasons for Food Insufficiency



Average Days of consumption of food groups



Farmers' Livelihoods

- Supply surplus,
- restricted movements,
- market unavailability, and
- reduction in demand from food service sector

have caused pressure on the income of the farmers and severely affected their standard of living.



Fighting the Pandemic



Implementing
Health &
Safety
Measures



Ensuring
Food &
Nutrition
Security



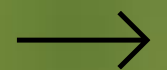
Protecting
Livelihoods





Implementing Health & Safety Measures

- Maintain social distancing and wear protective gear
- Farm and Health insurance
- Digital transactions (Fonepay, online services etc.)
- Remote Farm monitoring (Internet of Things and Smart Farms)

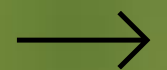




Ensuring Food & Nutrition Security

From the individual to the local levels

- Identify demand and supply of food
- Food systems should remain open and operational
- Balance domestic products and imports
- Reach out to vulnerable communities
- Awareness of Balanced diets





Protecting Livelihoods

- Motivate the youth to generate employment in Agri
- Storage and Logistics management
- Rebate and subsidize Agri debts
- Set minimum prices for agri products to prevent losses



A group of approximately ten women are standing in a poultry farm. Most are wearing light blue uniforms and face masks. One woman in the center is holding a white chicken. To her left, another woman holds a red water dispenser. Several women on the right are holding eggs. The background shows the structure of the farm with hanging lights and other chickens.

A Social Agri-preneur during COVID-19

Shreenagar is an integrated Agri company providing "One Stop Solution" to farmers.

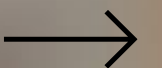
Acting as first responders to the crisis by providing jobs and access to products and services, and offering relief to vulnerable communities on the ground.

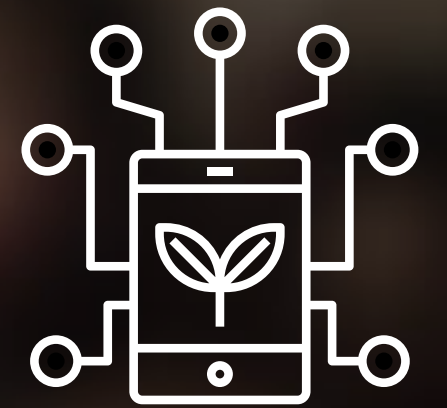
- Keeping farm and factories operational and follow full bio security protocols, regular PCR test and insurance of staff
- Lobby the government to permit operation of business and mobilize vehicles
- Online technical service to farmers
- Conducted online Skill Training classes to farmers and migrant workers
- Introduced Contract farming
- Streamlining storage system and cold rooms





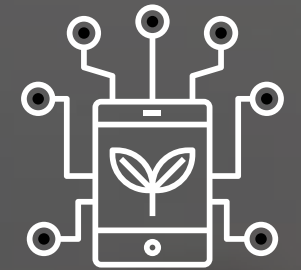
- Developed apps and online delivery of frozen meat goods
- Securely distributed eggs in the COVID affected communities
- Introduction of ready to cook products



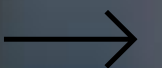


- Online technical service to farmers
- Conducted online and practical Skill Training classes to farmers, young women, migrant workers, and the differently abled group





- Introduction of low cost innovations like demand feeders
- Smart Farms tht include IoT to monitor farm activity 24/7
- Implemented Block Chain to track the flow of eggs in the supply chain
- Extruder technology to introduce floating feed



Make young and women entrepreneurs' and their communities' voices heard.

Prepare to Respond, Recover and Rebuild - taking the opportunity to shape a new tomorrow.


Integrate and collaborate across sectors to reduce the complexity of the crisis.

Empower by supporting with access to finance and insurance

Up-scale and support young and women entrepreneurs' ventures.



**Leaders on the Front Line:
Agri Entrepreneurs Are
Needed Now More than Ever**

A woman with grey hair, wearing a red short-sleeved top and a brown, mud-stained sarong, is working in a muddy field. She is holding a long wooden staff in her left hand and has her right hand on her hip. The background shows a green field under a cloudy sky.

Women has an art and skill to balance work and family

Innovation in Agriculture is going to reduce the drudgery

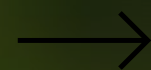
When women are economically empowered investment will be in right place

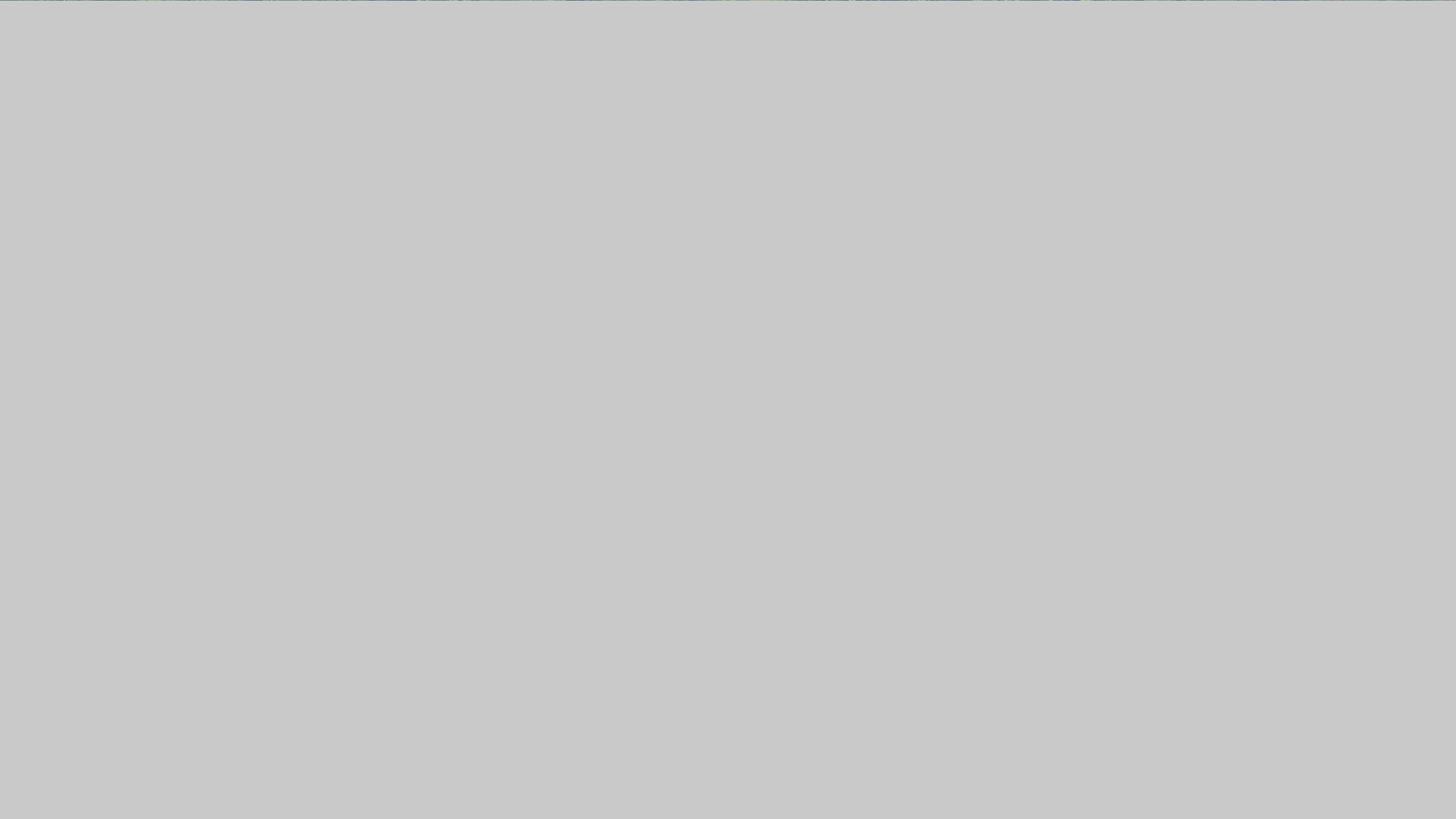
WOMEN IN AGRICULTURE

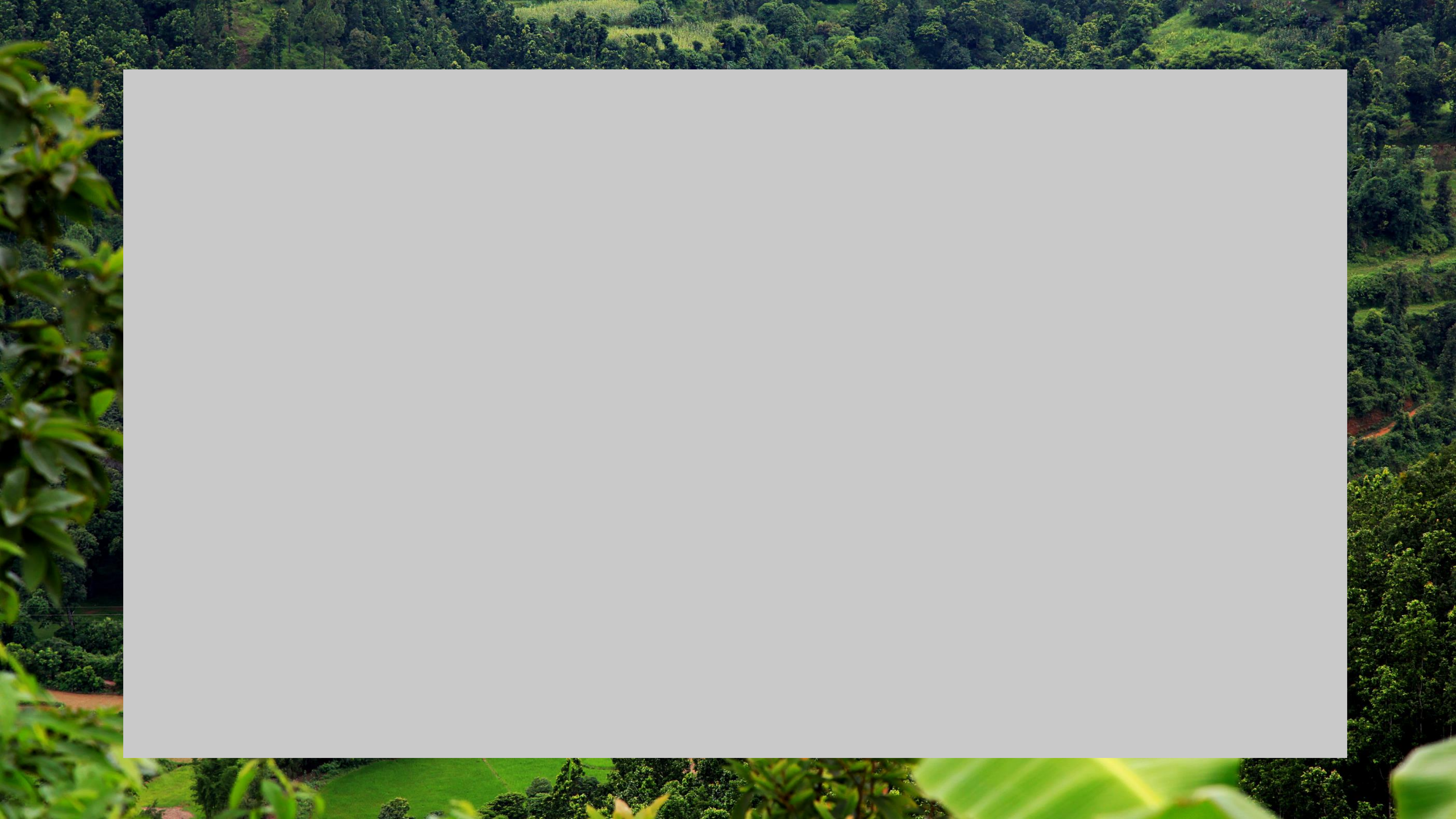
A woman in a white shirt and blue headscarf is the central focus, holding a wooden handle. The background is a blurred field with trees and a cloudy sky. In the top left corner, there is a green rectangular box with rounded corners containing a smaller image of a person in a field and the text 'YOUTH IN AGRICULTURE'.

YOUTH IN
AGRICULTURE

Sustainable agricultural production, food storage, food security, and subsidies are more important than ever. If the natural agricultural process is interrupted there will be consequences more disastrous than the virus itself. We need to act and we need to act fast – because if there's one thing that needs continuance, it's agriculture. **It must never stop.**







**BUSINESS
ACTION**

**LEADERSHIP
ENTREPRENEUR**

**VISION
ENTERPRISE**

**SOLUTIONS
FUTURE GROWTH**

Contact Information

For questions, comments,
and inquiries

**Phone Number
(WhatsApp)**

+977 9851081343

Email Address

moushumi@safnepal.com

LinkedIn

www.linkedin.com/in/moushumi-shrestha

Website

<http://www.safnepal.com/>
